



BEDPAN WASHER AF2



Benefit from our experience in manufacturing, consulting, sales, project planning, service and state-of-the-art equipment technology so that you can concentrate on your core tasks

AF2

WELCOME

With more than 45 years of experience in the field of medical and laboratory technology, the second generation of SCHLUMBOHM Medizin-Labor-Technologie-Hamburg GmbH is already successfully meeting the demanding requirements of the market. As early as 2014, company founder Hans-Joachim Schlumbohm retired from day-to-day operations and handed over the management to his son Tobias Schlumbohm. Schlumbohm Senior continues to be responsible for research and development in the company.

As a manufacturer of steam sterilizers, washer disinfectors, care combinations, stainless steel furniture, and systems for the treatment of medical waste, we supply hospitals and laboratories worldwide with our medical and laboratory technology. We have over 120 highly qualified employees working at our production sites in Germany and Italy.


The correct determination of requirements and the preparation of planning proposals are an absolute must. Professional project support, right up to installation and commissioning, is just as important as seamless customer service. With our solutions, you not only receive technically mature systems but also the assurance that you have a professional partner taking care of your functional processes.

An important key to our long-term success and market acceptance is ensuring quality, operational reliability, and functionality in day-to-day operations while harmonizing these features with economic aspects.



In this context, we have a team of over 20 service technicians available to you 365 days a year, 24 hours a day, providing immediate service throughout Europe. The management in Hamburg handles accepting orders and the scheduling of all field employees


Tobias Schlumbohm
 CEO


Hans-Joachim Schlumbohm
 Shareholder

AF2 PRODUCT INFORMATION

- 02 WELCOME
- 04 BEDPAN WASHERS
- 06 TECHNICAL SPECIFICATIONS
- 08 TECHNICAL SPECIFICATIONS
- 09 MODEL EXAMPLES
- 10 RANGE OF SERVICES
- 11 RANGE OF SERVICES
- 12 SERVICE + CONTACT



INNOVATIVE NEW PRODUCTS PRESENTED IN BRIEF THE NEW GENERATION OF OUR FULLY AUTOMATIC BEDPAN WASHER

SCHLUMBOHM Bedpan washer

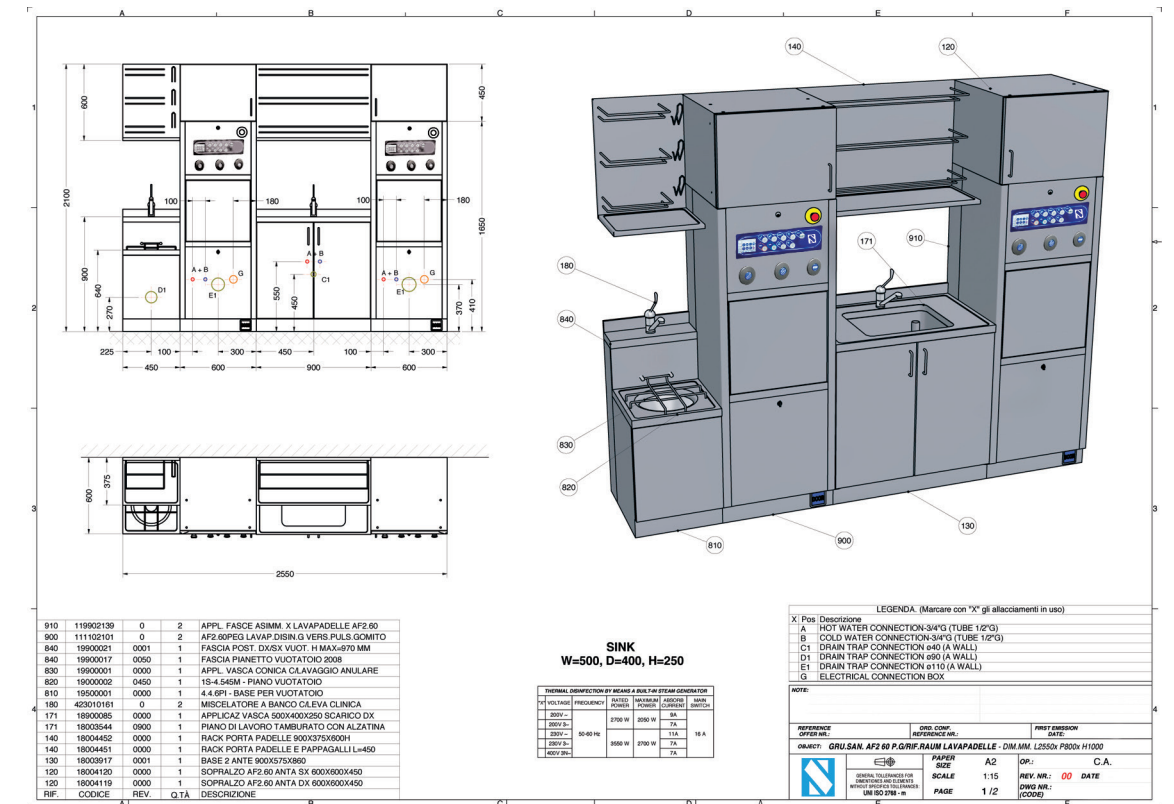
Bedpan washer devices and care combinations for fully automatic emptying, cleaning and thermal disinfection of bedpans, urine bottles and other containers for human excreta.



Turn key solutions

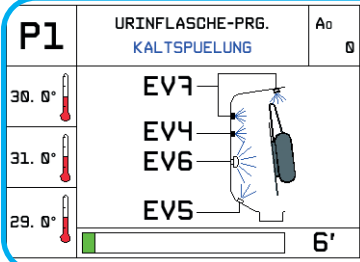
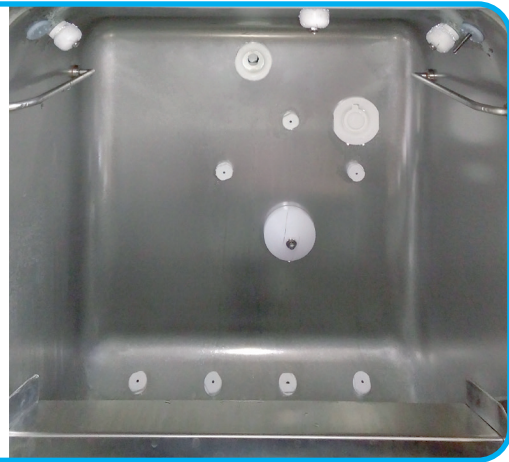
The AF2 range meets common planning requirements and can be adapted to any space. This comprehensive product range is suitable for new installations as well as for the replacement of existing units.

This applies to the individual unit and to care combinations consisting of wall cabinets, sink and washbasin. Depending on the situation, the units can be floor-standing or wall-mounted. A major advantage is the quick and easy installation.

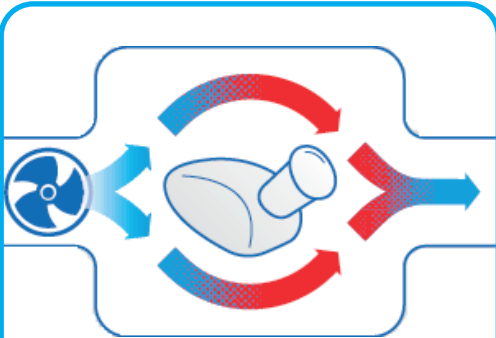


Technical specifications

Drawn chamber
 Extra large volume drawn cleaning chamber in AISI 304. No corners and welds for a high standard of hygiene. 14 nozzles ensure thorough cleaning without spray shadows.



ENC - Electronic Nozzles Control
 Intelligent control of water flow, water pressure and nozzles. Ensures reliable hygienic washing performance.



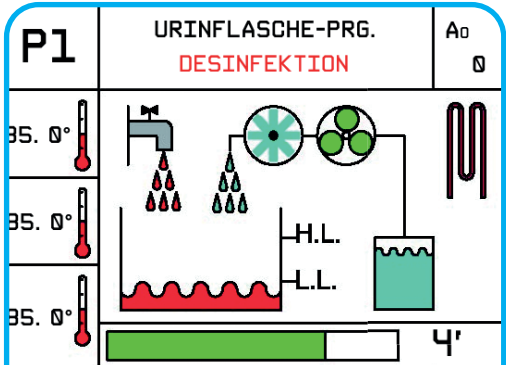
ACS - Air Cooling System
 At the end of the program, cooling and drying of the care utensils takes place with hygienically clean air via a HEPA 13 filter.



Large loading capacity
 Cleaning of 4 urine bottles or 1 bedpan and 1 urine bottle. Different holders for different sizes of containers.



AF2 APP
 Programming and monitoring of the machine via smartphone or tablet. Storage and archiving of reports in PDF or Excel format.



EHMI - Easy Human Machine Interface
 Graphic display for simple communication between user and machine. Clear visualisation for control of the machine parameters.



Multi washer function
 Insert basket with 3 integrated wing washer nozzles especially suitable for washing utensils of different sizes (e.g. kidney trays, urological bottles and similar containers).

Technical specifications

Unit variants	P-Line	C-Line
	up to 4 Urine bottles	up to 3 Urine bottles
Dimensions of the floor units / undersink units	600 & 900 width	450 & 600 width
Certified according to DIN EN ISO 15883-1 / 3	•	•
DVGW certification of the water installation according to DIN EN 1717	•	•
Completely made of stainless steel AISI 304	•	•
Wash chamber AISI 316 stainless steel, one casting and with rounded corners	•	•
USB interface for PC	•	•
4 standard programmes: Reduced - Normal - Intensive - EXTRA	•	•
Thermal disinfection with integrated 3.2 kw steam generator	•	•
A0 value adjustable from 60 to 6000, display indication during cycle	•	•
PT1000 temperature sensor in the wash chamber	•	•
Integrated printer for process documentation	+	-
Bluetooth interface for wireless communication between the machine and Android devices with the APP AF2	+	+
USB interface for direct loading of programmes via USB stick	+	+
Automatic door opening with pedal and infrared sensors, programme start via Elbow button	+	+
DCS (Drain Control System) Blocks programme start if drain is blocked	•	•
ENC (Nozzle Electronic Control) Control of water flow, water pressure and nozzles Individually controllable cleaning nozzles ensure optimum and resource-saving cleaning performance	•	•
14 nozzles: 6 fixed - 8 rotating	-	•
11 nozzles: 7 fixed - 4 rotating	•	-
Stainless steel water tank with 2 level indicators	•	•
EHMI (Easy-Human-Machine Interface) Clear colour display with indication of all programme parameters	•	•
Inspection opening in the cleaning chamber for temperature control	•	•
DVS (Disinfection Validation System) 2 additional PT1000 temperature sensors	+	-
DWC (Disinfected Water Cooling) Last rinse with disinfected water	•	•
SDS (Self Disinfection System) Self-disinfection of the unit after 24 hours	•	•
ETS (Empty Total System) Automatic residual emptying of the water	•	•
ACS (Air Cooling System) Cooling and drying of the care utensils	+	+
DVGW certificate for hydraulic system according to European standard EN 1717	•	•
MULTIWASHER function for various washing utensils of different sizes	+	+

• standard | + optional | - not available

MODEL EXAMPLES

Examples of care combinations for a wide range of requirements for hospitals and nursing homes ...
and many more combinations & variations.



Under counter model



Standing device



Built-in device



Small care combination



Small care combination



Built-in unit with toilet



You want to know more about this product?

... please contact our sales department.
We are looking forward to your inquiry.
Your SCHLUMBOHM Team

vertrieb@schlumbohm-medlab.com

Range of services



STEAM STERILIZERS + AUTOCLAVES

SHS Series + SLS Series

The new generation of fully automatic SCHLUMBOHM steam sterilizers/autoclaves of the SHS + SLS series is the product of cutting-edge development work and proven, advanced equipment technology for everyday use in the medical field. An easy User-interface, energy and resource-saving technology, and optimal accessibility for maintenance and service were key considerations in this pioneering development.



MEDICAL + LABORATORY WASHER DISINFECTORS

SWD Series + SWD LAB Series

The devices of the SWD + SWD LAB series are the ideal washer disinfectors for the safe and efficient reprocessing of surgical instruments, minimally invasive instruments, anesthesia materials, containers, surgical shoes, and laboratory utensils. In addition to an appealing design and compact size, innovative features to enhance process reliability and compliance with DIN EN ISO 15883 were prioritized during their development.



LARGE-CAPACITY WASHER DISINFECTORS

WDC Series

Large-capacity washer disinfectors are designed for the reprocessing of medical devices, as well as large-volume goods such as transport trolleys, containers, surgical shoes, and more. The development of these washer disinfectors took into account aspects such as safety, hygiene, durability, reliability, low maintenance, and resource-saving usage. These devices ensure a high level of operator safety while delivering optimal cleaning results.



STEAM DISINFECTION SYSTEMS

SHD Series

Large-scale disinfection systems utilizing the VSV process are designed for the effective disinfection of large-volume goods, primarily for infection prevention purposes. These systems are particularly suitable for economically disinfecting substantial quantities of solid and porous items such as mattresses and pillows. The latest generation of high-tech solutions has been developed with a focus on economy, resource conservation, and user-friendliness, ensuring maximum operator safety and achieving optimal disinfection results.



BATCH DOCUMENTATION

SCDS

The SCDS batch documentation system provides a comprehensive system solution for complete sterile material documentation. It has been specifically developed to enable fast, simple, and secure documentation that fulfills all legal requirements. All work steps in the treatment process are meticulously recorded, documented, and stored. As a result, the time needed for documenting processes in the sterile material supply department is significantly reduced.

Range of services



MEDICAL WASTE TREATMENT

Truster T-Series

Truster: a technology to be trusted for "biohazard" waste treatment in total safety and respecting eco-sustainability. The purpose of biohazard waste treatment must be to sterilize them and make them unidentifiable and non-reusable. A combined process of mechanical grinding and saturated steam sterilization without any risk of aerobic pollution and of bad smell emission.



VALIDATION

Quality assurance during reprocessing

Due to our high professional standards in the fields of cleaning, disinfection, and sterilization, we have a team of qualified application engineers available to assist you. When validating treatment processes, our focus is on implementing quality assurance measures and ensuring the requirement of reproducible processes in the treatment of medical devices. We are here to help you analyze and optimize your treatment process.



CARE COMBINATIONS

AF2 Series

Bedpan washers and care combinations are designed for fully automatic emptying, cleaning, and thermal disinfection of bedpans, urine bottles, and other vessels used for human excreta. These systems fully comply with the requirements of the German Medical Devices Act (MPG), the Medical Devices Operator Ordinance (MPBetreibV), DIN EN 15883 Parts 1 and 3, and the recommendations of the Robert Koch Institute (RKI) on "Requirements for hygiene in the reprocessing of medical devices".



STAINLESS STEEL FURNITURE

Functional furniture

Our medical functional furniture, crafted with high-quality materials and excellent workmanship, is renowned for its adherence to the highest hygiene standards, extensive functionality, and individual adaptability. The use of stainless steel grade 1.4301 ensures not only resistance to disinfectants but also a prolonged lifespan compared to other materials.

OR-TABLES / OR-LIGHTS



TABLE TOP STERILIZERS



CSSD AUTOMATION



... and more. Please contact our sales department. We will find the right solution for you.

Europe-wide 24-hour emergency service

SCHLUMBOHM

Medizin-Labor-Technologie-Hamburg GmbH

Grenzkehre 1, 21079 Hamburg, Germany

Phone: +49 (0) 40 - 76 91 50 0

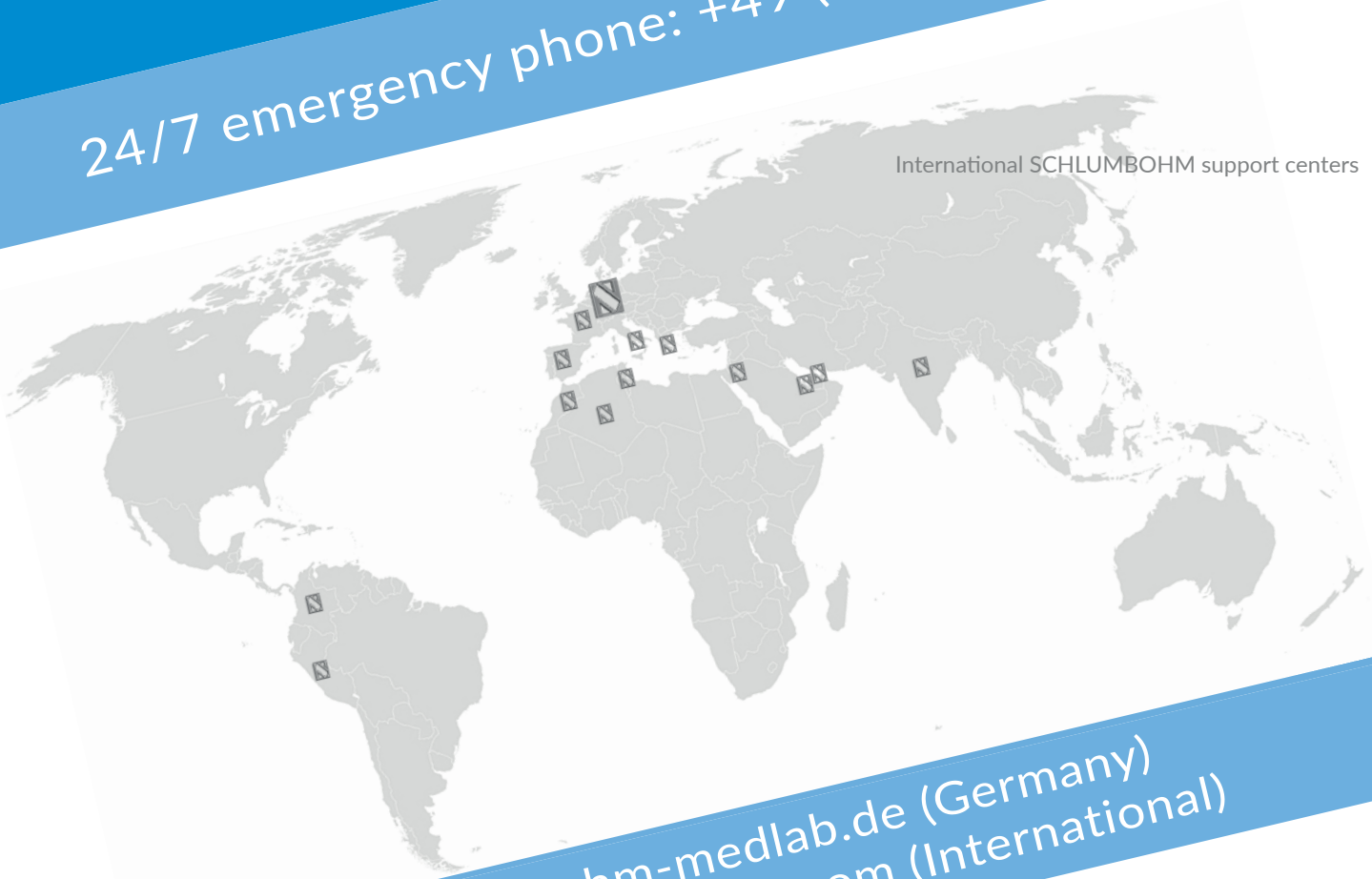
Fax: +49 (0) 40 - 76 91 50 26

E-mail: info@schlumbohm-medlab.com

STAMP



24/7 emergency phone: +49 (0) 171 - 4 77 49 75



International SCHLUMBOHM support centers

www.schlumbohm-medlab.de (Germany)
www.schlumbohm-medlab.com (International)



goes green!

EN ISO 14001 CERTIFIED